



# Cardinia

Cardinia Cultural Centre

Technical Specifications

Cardinia Cultural Centre

2022



**Technical Supervisor**

**Stuart Sinclair**

**P: (03) 5943 4004**

**M: 1300 887 624**

**E: [s.sinclair@cardinia.vic.gov.au](mailto:s.sinclair@cardinia.vic.gov.au)**

## Table of Contents

Stage & Dimensions .....	4
Brief Stage Description: .....	4
Stage Dimensions:.....	4
Auditorium .....	4
Orchestra Pit.....	4
Flying Facilities .....	5
Drapery.....	5
Staging Units .....	6
Access Equipment.....	6
Safety Curtain.....	6
Loading Dock.....	6
Lighting.....	6
Lighting Positions.....	6
Stage Electrics Bars .....	6
FOH Bridge.....	6
FOH Perches (PS&OP) .....	6
Bio Bar(PS&OP) .....	6
Other LX Patch Locations .....	6
Dimming .....	7
Control .....	7
House Lights.....	7
Lighting Fixtures.....	7
Profiles .....	7
Fresnel's.....	7
Wash .....	7
Followspots.....	8
Other Fixtures.....	8
3-Phase Power.....	8
Cable Stock .....	8
Audio .....	9
Control Positions.....	9
Control & Amplification.....	9
Primary Mixer .....	9

Amplifiers.....	9
Speakers.....	9
Foldback Speakers.....	9
Play-Back/Recording.....	9
Microphones / Input Gear.....	9
Audio Accessories.....	10
Audio Patching.....	10
Audio Visual.....	10
Data Projector.....	10
Hearing Loop.....	10
Digital Media Server.....	10
Projection Surface.....	10
A/V Play-Back Equipment.....	10
A/V Cabling.....	10
BOH.....	11
Communications.....	11
Stage Managers Desk.....	11
Talk-Back System.....	11
Paging / Show Relay.....	11
Q-Light System.....	11
Dressing Rooms.....	11
Laundry /Wardrobe.....	11
Production Facilities.....	12
Green Room.....	12
Stage Door.....	12
Orchestral.....	12
Attachment A – Theatre Stage Plan.....	13
Attachment B – Theatre Auditorium Plan.....	14
Attachment C - Theatre Lighting PlotAttachment D – Theatre Hanging Plot.....	15

## Stage & Dimensions

### Brief Stage Description:

Unraked stage with a proscenium arch and no flying facilities. Hardwood floor covered with Weathertex sheets. Screwing into the stage surface is NOT permitted

**Stage Distributed Load Limit:** 765 Kg/m<sup>2</sup>

**Stage Point Load Limit:** 765Kg

**Stage Rake:** NO

### Stage Dimensions:

**Proscenium Width:** 9.042m **Proscenium Height:** 5.434m

**Setting Line:** 0mm Upstage of Proscenium

### Stage Measurements: (SL: Setting Line, CL: Centre Line)

SL to DS edge of apron:	1.465m
SL to rear wall:	7.476m
DS edge of apron to rear wall	8.918m
CL to OP wall (or obstruction):	8.6m
CL to PS wall (or obstruction):	15.340m

**Overhead Obstructions:** Fly Galleries located on PS & OP, clearance height 4.528m

*See: Attachment A - Theatre Stage Plan*

## Auditorium

2.35m rise over 12 rows with one aisle only on each side. Space to accommodate 15 wheelchairs In G row

**Maximum Seating Capacity:** 356

*See Attachment B - Auditorium Seating Plan*

## Orchestra Pit

The orchestra pit is covered by structural flooring sections; the standard venue configuration has the pit covered. These sections can be removed if desired. (3) Cardinia technical staff are required for a 2 hour call to open/close the orchestra pit, this is at the cost of the hirer. This task can at times be completed before arrival by arrangement. If completed during venue booking times, sufficient space must be kept clear for staff to safely complete the job.

Access to the orchestra pit is via the stairs from auditorium seating on the PS.

**Orchestra Pit Floor @ 600mm below auditorium**

**Orchestra Pit Floor @ 1760mm below stage level**

**Orchestra Pit Dimensions:** 9m x 2.4m (DS wall tapers either side of centre)

**Maximum Capacity:** 15-20 persons

## Flying Facilities

The theatre has **NO** fly tower. There are 4 Jands motorised direct drive pile winding winch bar used for electrics only with a weight limit of 300kg per bar. The system is operated from OP Gallery Stage. The supervising technician will oversee all flying of scenery and operate the system at all times.

Venue masking is hung from 7 fixed bars Standard masking configuration includes: Soft Proscenium, 4 sets of legs & 2 borders, 2 sets of tabs and a projection screen

\*Electrics Bars may not be relocated. Scenery bars may not be relocated. Additional loads cannot be placed on the I beams

**Total Number of Lines:** 11

**Panorama Lines:** 0

**Batten Drift:** See Attachment C – Theatre Hanging Plot

**Batten Type:** 50mm O/D Alloy Pipe

**Batten Length:** 12.4m

**Batten Extensions:** NO

**Batten Pickups :** 4

**Fly Line Safe Working Load (SWL)**

Electrics Bars: 300kg

## Drapery

**House Curtain:** Red 2 x 7m x 6.5m @ 80% Fullness

\*Please note that the house curtain is motorised (French Action). Travel time is approximately 5 seconds. Control is via the SM console and Control Room.

**False Proscenium:** 1 Flat Border 14.6m x 3.05m & 2 Flat Legs 1.9m x 7.7m

**Legs:** (All 50% Full) 8 @ 2m x 6.5m

**Borders:** (All 50% Full) 2 @ 9m x 1m

**Tabs:** (All 50% Full) 2 @ 7 m x 6.5m, 2 @ 7m x 6.5m

**Cyclorama:** White plastic projection screen, 8m x 6m

\*All black stage masking is manufactured to A/NZS 1530 Parts 2&3. They are made from inherently fire retardant wool.

## Staging Units

8 x Fastfold 1.8m(W) x 2.4m(L) x 60cm (H)

2 x Sets of steps with handrail

## Access Equipment

**Elevated Work Platform:** Snorkel 25UL not motorised vertical lift

**Maximum Platform Height:** 7.45m

**EWP Operating Restrictions:** Operators must provide a current license.

**Ladders:**

1 x 2.4m Fiberglass double sided step ladder

## Safety Curtain

The theatre has No fire safety curtain installed

## Loading Dock

Truck Access is via a driveway located on Waterford Rise (second driveway coming from Lakeside Blvd) and traverse down the driveway entrance of carpark. The loading dock is 8.5m x 2.5m and is widens past the entrance. There is a decline towards the dock for drainage.

Loading Dock Height: 1.1m

Door Dimensions: 4000mm (H) x 3200mm (W)

Prompt Loading/Set-up Area 8m x 10m

## Lighting

### Lighting Positions

#### Stage Electrics Bars

4 on-stage electrics bars @ 12400mm long. 48mm O/D pipe

\*All bars are fixed in their position and may not be swung

#### FOH Bridge

15.7m long,. 48mm O/D pipe

Access via galleries

#### FOH Perches (PS&OP)

2m of Floor mounted 48mm O/D pipe.

#### Bio Bar (PS&OP)

2m Floor Mounted 48mm O/D pipe

#### Other LX Patch Locations

Nil

## Dimming

Dimming for the theatre is centralised in the dimmer room, located PS Gallery. All lighting patches run direct to a dimmer. No sub patch is required.

**Total Number of Dimmer Channels:** 60

**Dimmer Type:** LSC (2.4k capacity)

**Other Dimmers Available:** Nil

## Control

**Lighting Desk:** High End Full Boar 4 and playback wing

NB: We do not remove the lighting console from its standard position

**Control Channels:** 4 Universes

**Signal Output:** DMX512, Artnet

**Signal Distribution:** 2x DMX Rings

**Remote Riggers:** No

## House Lights

**Stand-Alone Control:** Available from PS Rack or Control room. 100%, 50%, 0% Presets. Fixed Fade Time.

**DMX Control:** Not currently available.

## Lighting Fixtures

### Profiles

Make	Model	Beam Angle	Accessories	Wattage	Total	Lamp
Selecon	Acclaim	18/34	Some Gel Holders	600w	22	GKV
Selecon	Acclaim	24/44	Some Gel Holders	600w	4	GKV
EK	EProfile HP	15/30	Nil	200w	6	LED

### Fresnel's

Make	Model	Accessories	Wattage	Total	Lamp
Selecon	Compact	(8) Barn-doors, some Gel Holders	1200w	7	T29

### Wash

Make	Model	Accessories	Wattage	Total	Lamp
Silverstar	LED Cyc	RGBA-Lime LED Cyc Unit	190w	5	LED

### Followspots

Make	Model	Beam Angle	Accessories	Wattage	Total	Lamp
Robert Juliet	Cricket	10.5-22.5	6 colour magazine*	1000w	1	CP 40/ CP 71

### Other Fixtures

Make	Model	Details/Accessories	Wattage	Total	Lamp
Pro Shop	UV LED	UV LED		4	
Pro Shop	HO Bars	LED Bars*		17	
EK	R3	Moving Head RGBW LED PAR		8	
	Mirror Ball	12 inch with motor control		1	
Unique	Hazer	Local/DMX Control		1	
	RGB LED Par	LED Par RGB		8	
Robe	Robin 300E Classic	Moving Light		4	
		Floor Stands (H Stands)*		4	
		Gobo holders (Size M)		7	

\* Denotes fixtures in storage, please consult technical coordinator if these fixtures are required.

### 3-Phase Power

- 5x 40A PS Gallery
- 1 x 40A OP Gallery
- 1 x 40A PS
- 1 x 40A OP
- 1 x Gantry 1
- 1 x Gantry 2
- 2 x FOH

### Cable Stock

- The theatre has a Limited stock of 10A 240V Extension leads to suit most requirements
- 3 x 25m 6-Way 10A Weiland Looms



## Audio

### Control Positions

**Control Room:** Located above the rear of the auditorium, standard location for house console

**Other:** Other locations by arrangement only. (House desk will not be moved from its location)

### Control & Amplification

#### Primary Mixer

**DiGiCo SD9-24 Digital Console** 96 Channels (mono or stereo), 48 Aux/ Sub-Group Busses), 12 Control Groups, 2 Solo Stereo Busses, 12 x 8 Matrix, 16 x 32 Band Graphic Eq's, 155 Dynamic EQ processors, 155 Multiband Compressors and 155 DiGiTuBes, 12 onboard stereo FX units, 15 inch touch screen

NB: We do not remove the Sound console from its standard position

#### I/O Hardware:

Local - 8in/8out Mic/Line, 4x AES  
 PS Stage MaDi Rack - 48in/16out (fixed location)  
 Portable MaDi Rack- 32in/8out  
 DiGiGrid MGB

#### Amplifiers

Nil

#### Speakers

3 x QSC KW 122 1000w Powered Speakers

2 x QSC KW 181 1000w Powered Subwoofers

#### Foldback Speakers

4x RCF ART 735

2 x JBL EON 15 Speakers

#### Play-Back/Recording

Make	Model	Details/Accessories	Total
Denon	DN300CMKII	CD/USB Player –in control room	2

#### Microphones / Input Gear

Make	Model	Details/Accessories	Total
Sennheiser	G3 500	Hand Held Radio Mics Or body Pack	8
Jag	IMX6A	Headset Mics	8
Shure	SM58	Dynamic Vocal Mic	6
Shure	SM57	Dynamic Vocal Mic	7
Sennheiser	E904	Cardoid Microphone	4
Shure	Beta 52	Kick Drum Mic	1
Rhode	NT5	Condenser Mic	2
Rhode	M5	Condenser Mic	8
Shure	EZO	Cardioid Condenser Hanging Choir Mic	4
BSS	Single Active DI	Active Di	4
Radial	Stereo Passive Di	Stereo Passive Di	2
Radial	USB DI	USB DI	1
Shure	MX418/c	Condenser Gooseneck Mic	2

## Audio Accessories

11x Boom Mic Stands

3x Short Stands with round base

5x Round Base Straight Stands

1x Music Stands Currently used as SMD

## Audio Patching

Limited Analogue Patching is available from:

DSPS , DSOP, and Orchestra Pit

## Audio Visual

### Data Projector

- 1 x Epson EB-L1405UNL 8000 ANSI-lumen WUXGA 3LCD Data/Video Projector
- Projector is rigged in the auditorium beneath FOH Gantry 2. 10.7m from FOH Curtain and 18m from Cyc

### Hearing Loop

1x Ampetronic ILD120 Hearing Loop Amplifier

### Digital Media Server

Arkaos Media Master Express driven by Mac Mini via Artnet. Media must be USB

### Projection Surface

**Cyclorama Screen:** White plastic projection screen, 8m x 6m

### A/V Play-Back Equipment

-Laptops & media server available on request.

### A/V Cabling

- The theatre has a limited stock of AV cable to suit its equipment.

## BOH

### Communications

#### Stage Managers Desk

Nil

#### Talk-Back System

**Master Unit:** Creative Audio C120

**Total Sub Stations:** 5 Belt-Packs

**Total Headsets:** 7

**Radio Units:** Nil

**Talk-Back Patching Locations:** Control Room (4)  
 Stage Managers Rack  
 Orchestra Pit  
 USPS  
 DSOP  
 USOP  
 Production Desk (Row G)  
 Tech Office

#### Paging / Show Relay

- No Paging to BOH areas
- Show relay audio to BOH locations
- Show relay video to BOH locations

#### Q-Light System

Nil

### Dressing Rooms

Dressing Room	Capacity	Area Sq. m	Size
Dressing Room 1	6	12	3m wide x 4m Length
Dressing Room 2	6	18.75	2.3m wide x 4m Length
Dressing Room 3	30	31.5	4.5m wide x 7m Length
Dressing Room 4	25	22.5	4.5m wide x 5m Length
Dance Studio	110	117	9m Wide x 13m Length

### Laundry /Wardrobe

**Washing Machine:** No (there is facilities offsite nearby)

**Clothes Dryer:** No (there is facilities offsite nearby)

**Drying Room:** No

**Iron/Boards:** Yes, 1

**Clothes Racks:** Yes, 6 Portable

### **Production Facilities**

**Production Desk:** Facilities include lighting data, Comms, DMX and audio ties

**Production Office:** NO

**Internet Access:** Yes, Public WIFI

### **Green Room**

**Tea/Coffee Facilities:** Yes, Zip boil unit

**Fridge/Freezer:** Yes

**Microwave:** Yes

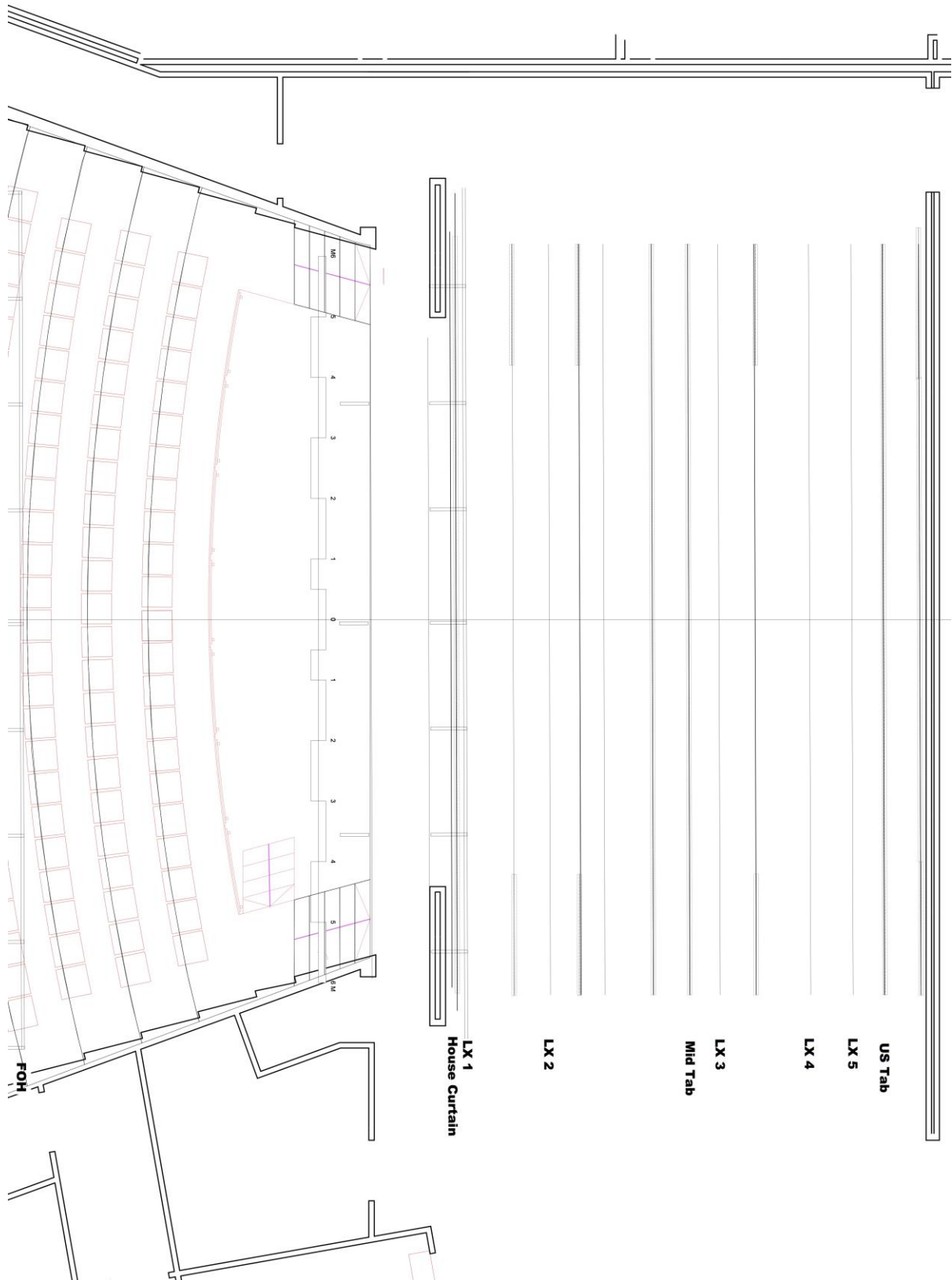
### **Stage Door**

-Stage Door is located at the loading dock

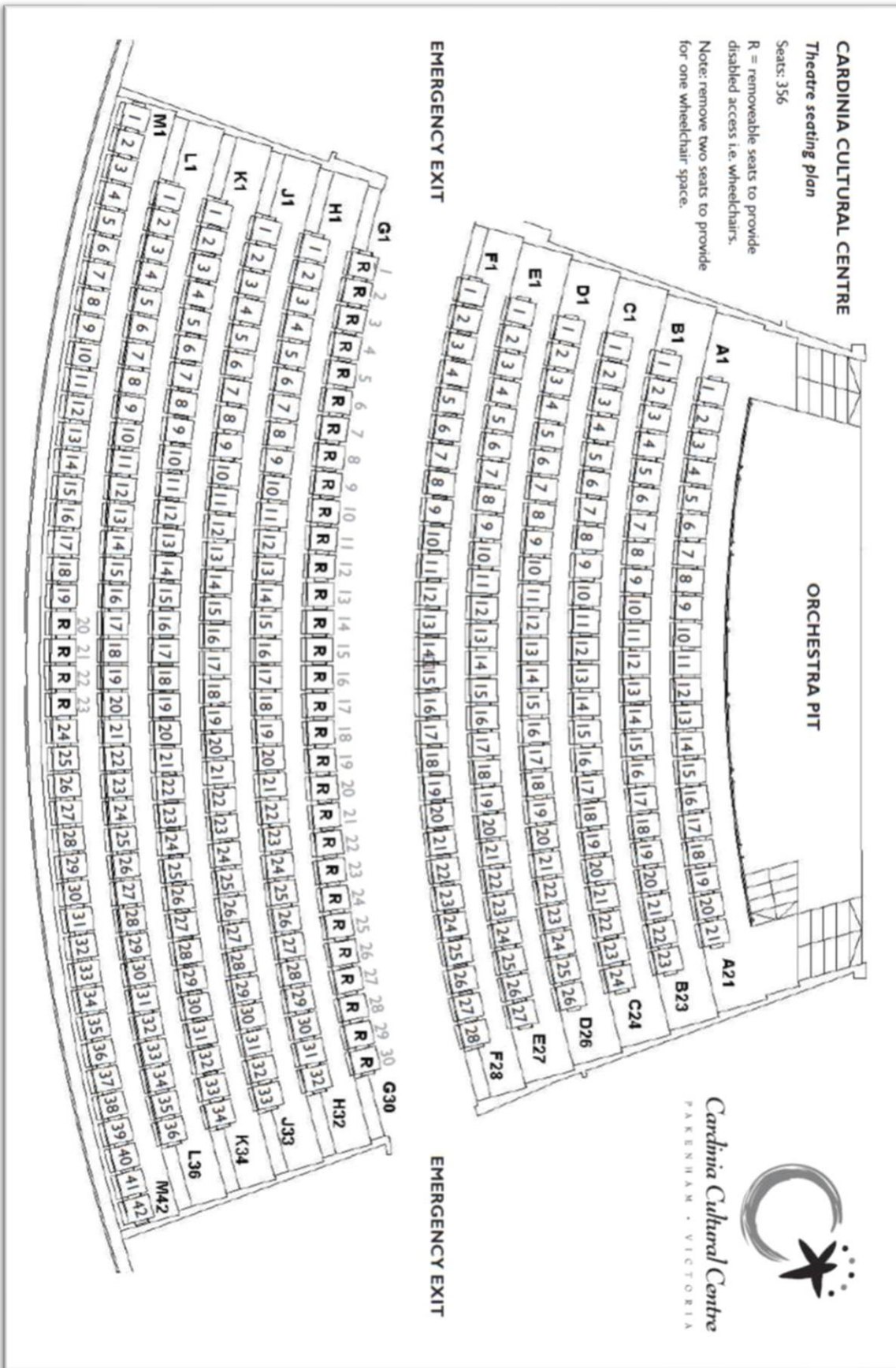
### **Orchestral**

-Yamaha C3 Grand Piano. (Charge applies)

### Attachment A – Theatre Stage Plan



Attachment B – Theatre Auditorium Plan



### Attachment C - Theatre Lighting Plot

L101 **Lighting Plot**  
 Scale: 1:150

#### Symbol Key

Light	Quantity
7' Fresnel	10
Acclaim Zoomspot 18-34" 5.1kg	13
EK LED eProfile HP Zoom 25 50deg	6
9.6 Kg	
Yqiang Mycy/c2 7.6 Kg	5
ProShop UV LED 2.3 Kg	4
Selecon Acclaim Zoomspot 24-44deg 5.1 Kg	8
RGB LED PAR	8

Moving Light	
Robin 300 Spot 20 Kg	4
EK Lighting R3 Beam Wash 6.6 Kg	8

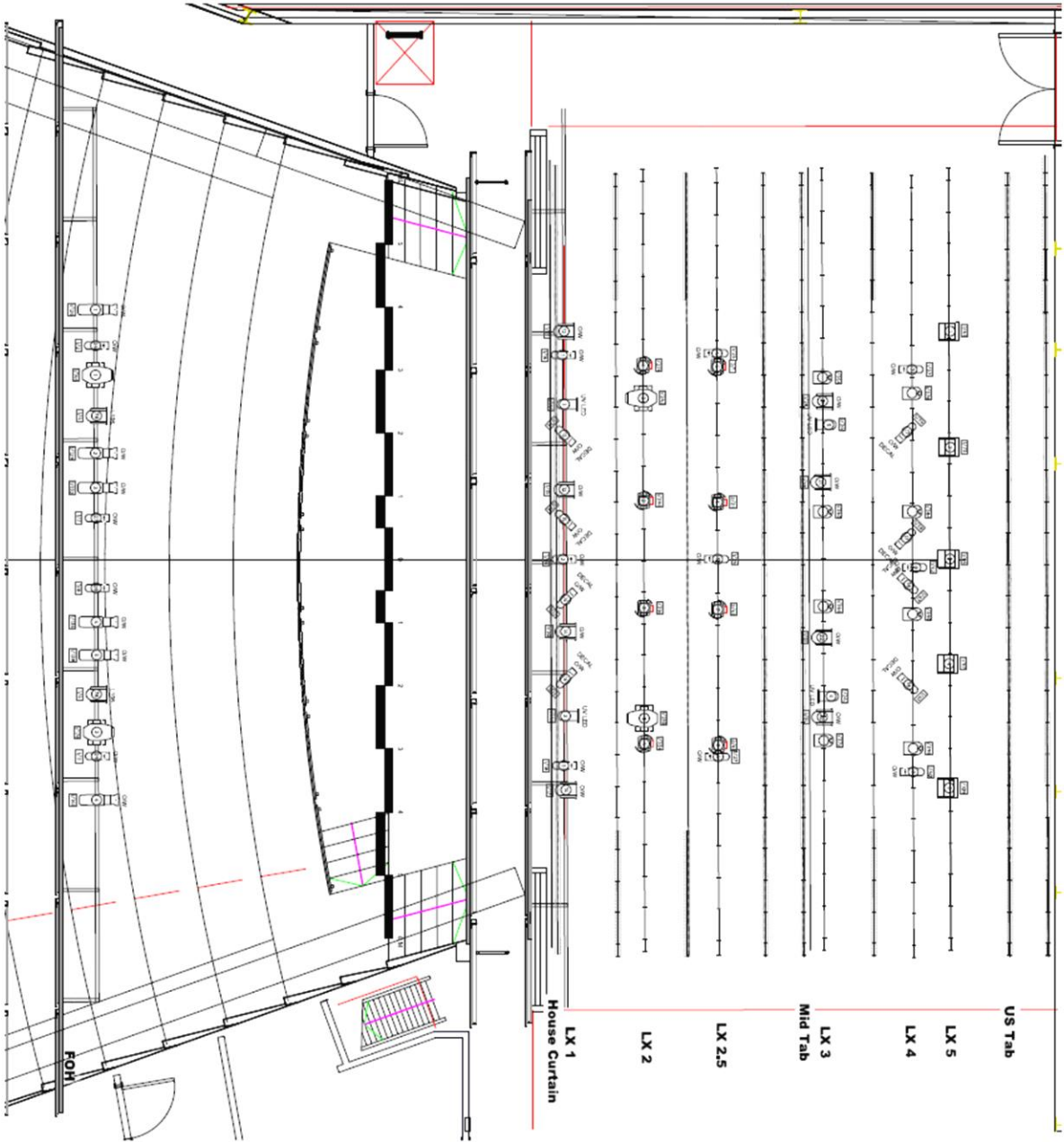
  

Typical

Color

#### Color Summary

Color	Size	Count
<span style="color: red;">●</span> L106	7' Fresnel	2
O/W	125mm	21
O/W	7' Fresnel	8
O/W	159mm	6
UV LED	N/A	4





## Attachment D – Theatre Hanging Plot

Line Number	Distance from SL (mm)	Venue Standard Allocation	Stage to Grid
Fixed	370	<b>Lighting Bar 1 (LX1)</b>	7000
Fixed	900	Legs 1 LX 1.5	7000
Motor 1	1500	<b>Lighting Bar 2 (LX2)</b>	6300
Fixed	2100	Legs & Border 2	7000
Fixed	2650	LX 2.5	7000
Fixed	3200	Border 3	7000
Fixed	3750	Mid Tab	7000
Motor 2	4300	<b>Lighting Bar 3 (LX3)</b>	7000
Fixed	5000	Legs 3	7000
Motor 3	5700	<b>Lighting Bar 4 (LX4)</b>	7000
Fixed	6400	<b>Lighting Bar 5 (LX5)</b>	7000
Fixed	7100	US Tabs	7000
Motor 4	7700	Screen	7000